

## Quay 24 North

### General

Area	Brevika South
ISPS	No
Length	86 m
Width	Approx. 15 m
Depth (Beleived, but not guaranteed. Pls refer to official charts)	11,0 m
Bollard	75 t
Load per square meters	5,0 t/m2
Axle load	120 t

### Shore Power

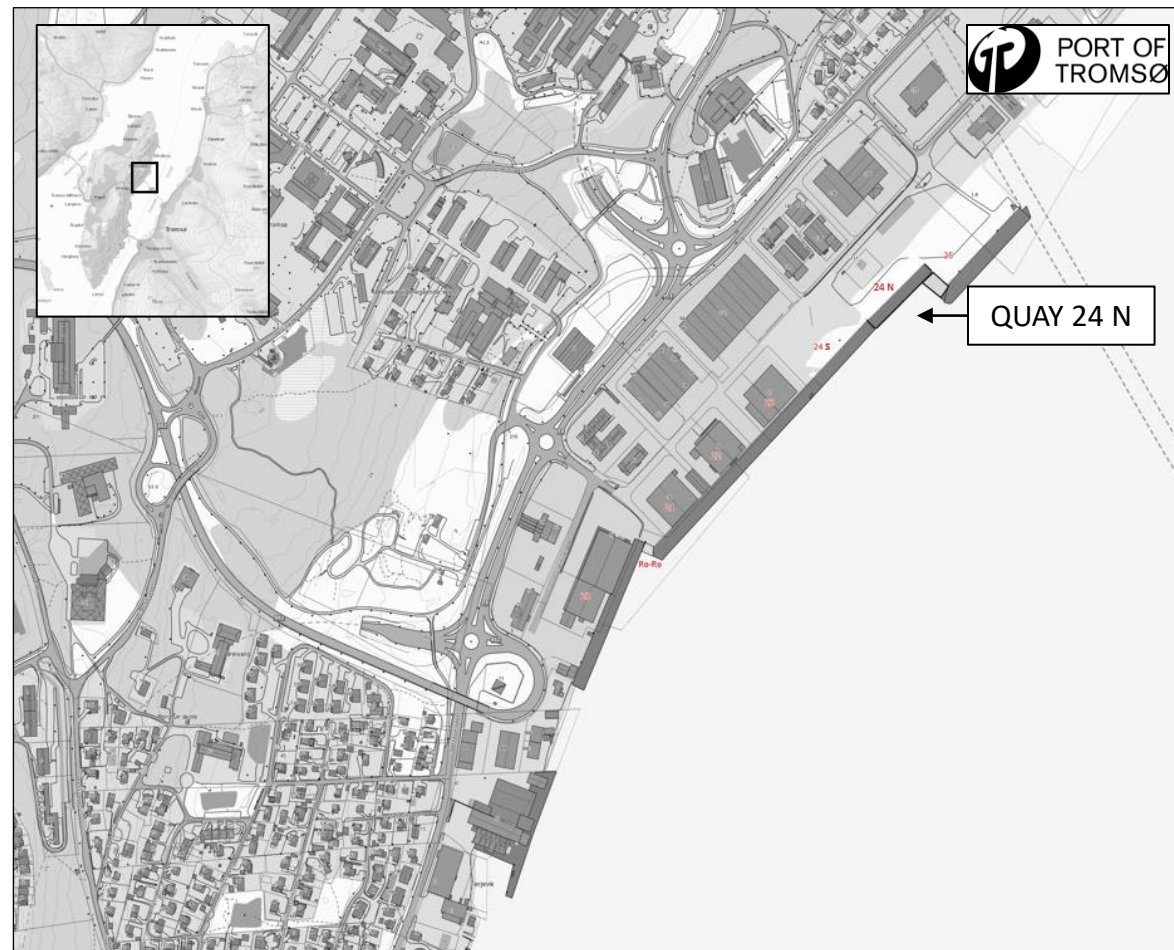
230 V	N/A
400 V	N/A

### Fresh Water

3 x Outlets	25 t/hour
-------------	-----------

### Notes

Fresh water: 1 x outlet on quay 24 North



### Contact Port of Tromsø for more information at:

E-mail: [havnevakta@tromso.havn.no](mailto:havnevakta@tromso.havn.no)  
Phone: + 47 911 07 444  
VHF ch 12