

Quay 25

General

Area	Brevika South
ISPS	Yes
Length	150 m
Width	20 m
Depth (Beleived, but not guaranteed. Pls refer to official charts)	11,5 m
Bollard	75 t / 80 t / 250 t
Load per square meters	5,0 t/m2
Axle load	100 t

Shore Power

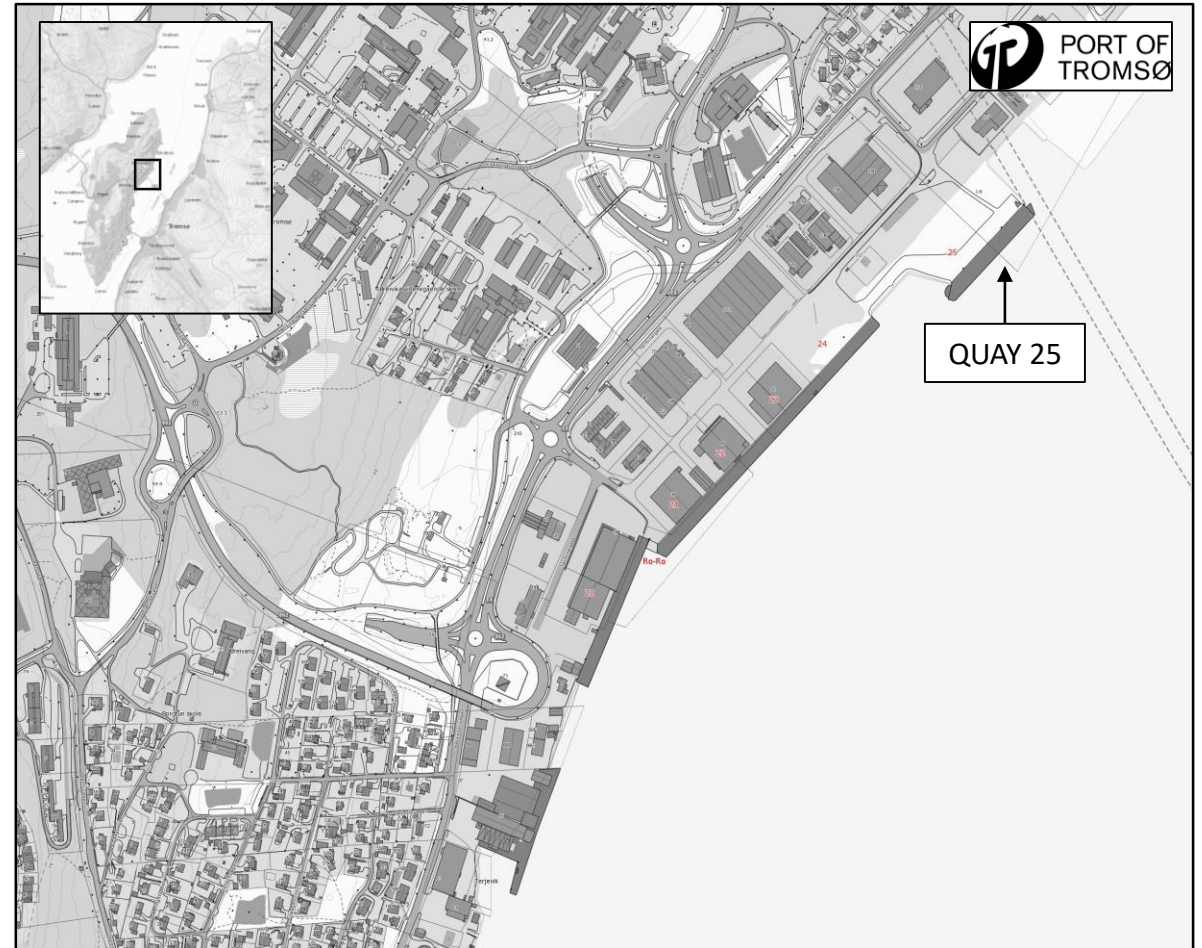
230 V	3 x 125 A (50 Hz, 3-Phase)
400 V	3 x 125 A and 1 x 650 A (50 Hz, 3-Phase)

Fresh Water

6 x Outlets	25 t/hour
-------------	-----------

Notes

None



Contact Port of Tromsø for more information at:

E-mail: havnevakta@tromso.havn.no
Phone: + 47 911 07 444
VHF ch 12