

Quay 23

General

Area	Brevika South
ISPS	Yes
Length	102 m
Width	Approx. 15 m
Depth (Beleived, but not guaranteed. Pls refer to official charts)	11,0 m
Bollard	50 t
Load per square meters	3,0 t/m ² – 10,0 t/m ²
Axle load	30 t / 50 t / 100 t

Shore Power

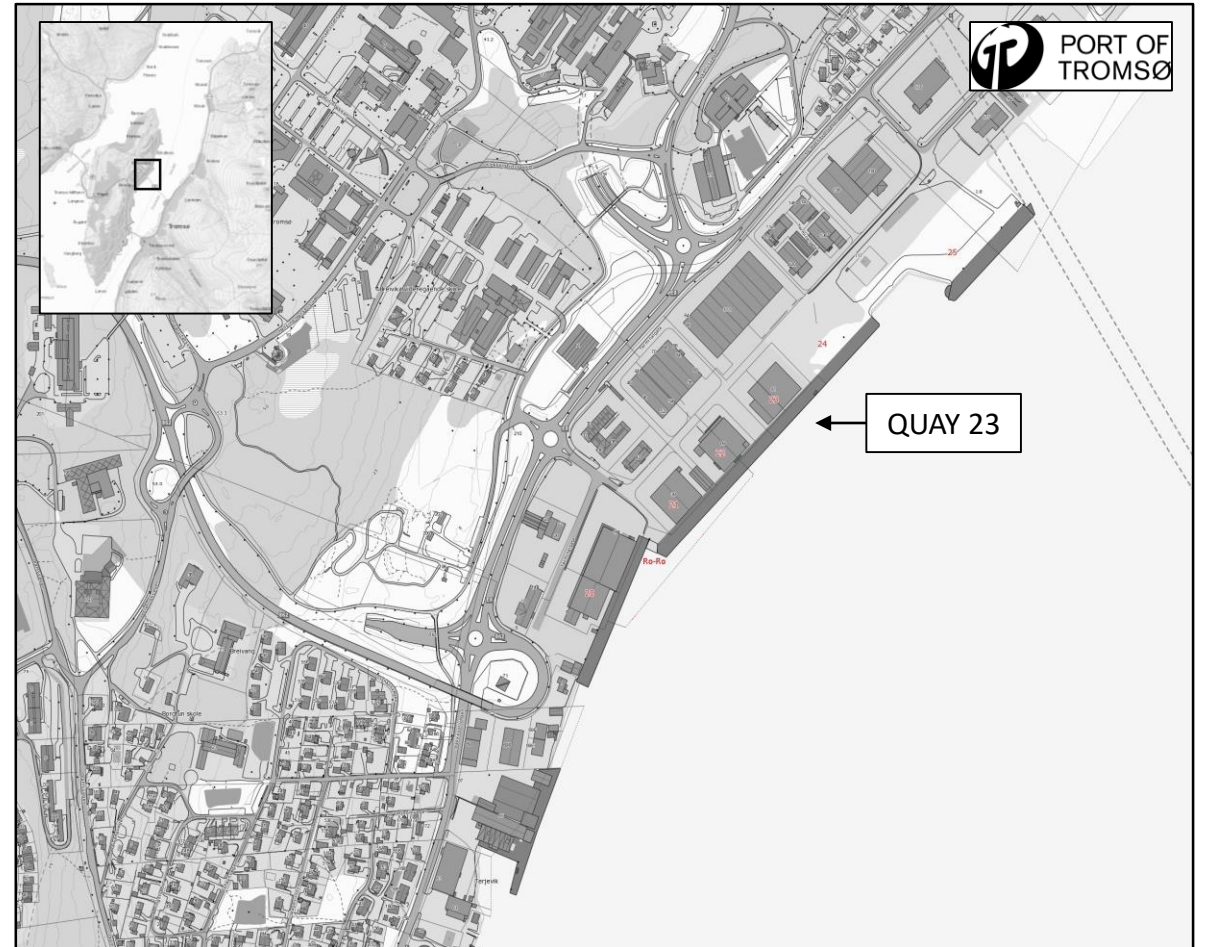
230 V	No
400 V	No

Fresh Water

1 x Outlet	25 t/hour
------------	-----------

Notes

Total length from Quay 21 to Quay 24 is 410 meters.



Contact Port of Tromsø for more information at:

E-mail: havnevakta@tromso.havn.no
Phone: + 47 911 07 444
VHF ch 12