

Quay 21

General

Area	Brevika South
ISPS	Yes
Length	102 m
Width	Apporx. 15 m
Depth (Beleived, but not guaranteed. Pls refer to official charts)	10,4 m
Bollard	50 t
Load per square meters	3,0 t/m2
Axle load	55 t

Shore Power

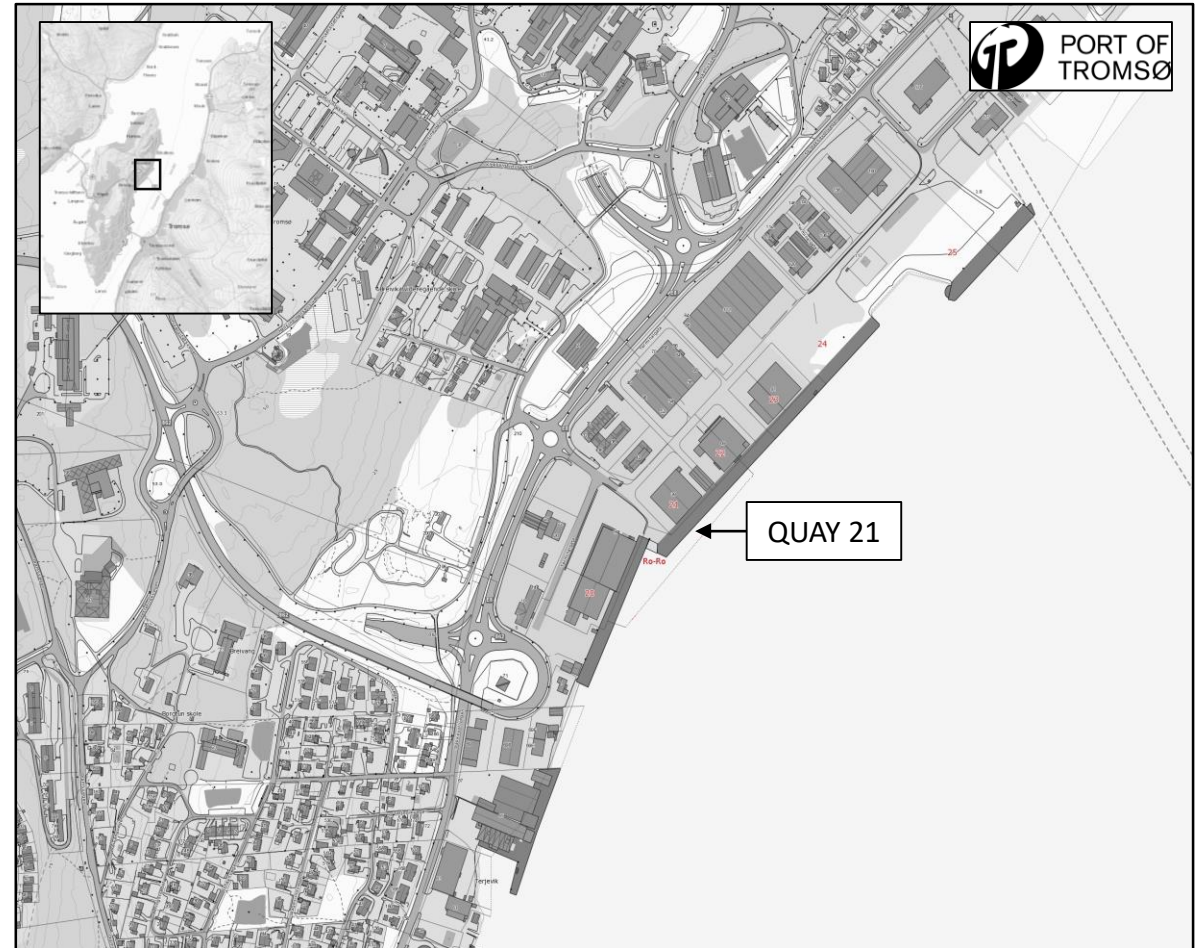
230 V	No
400 V	1 x 125 A (50 Hz, 3-Phase)

Fresh Water

2 x Outlets	25 t/hour
-------------	-----------

Notes

Quay 21 is adapted for wire spoling machine.
Total length from Quay 21 to Quay 24 is 410 meters.



Contact Port of Tromsø for more information at:

E-mail: havnevakta@tromso.havn.no
Phone: + 47 911 07 444
VHF ch 12