

Quay 20

General

Area	Brevika South
ISPS	No
Length	194 m
Width	Approx. 10 m
Depth (Beleived, but not guaranteed. Pls refer to official charts)	South end: 7,5 m and North end: 6,5 m
Bollard	South end: 25 t and North end: 50 t
Load per square meters	2,0 t/m ²
Axle load	15 t

Shore Power

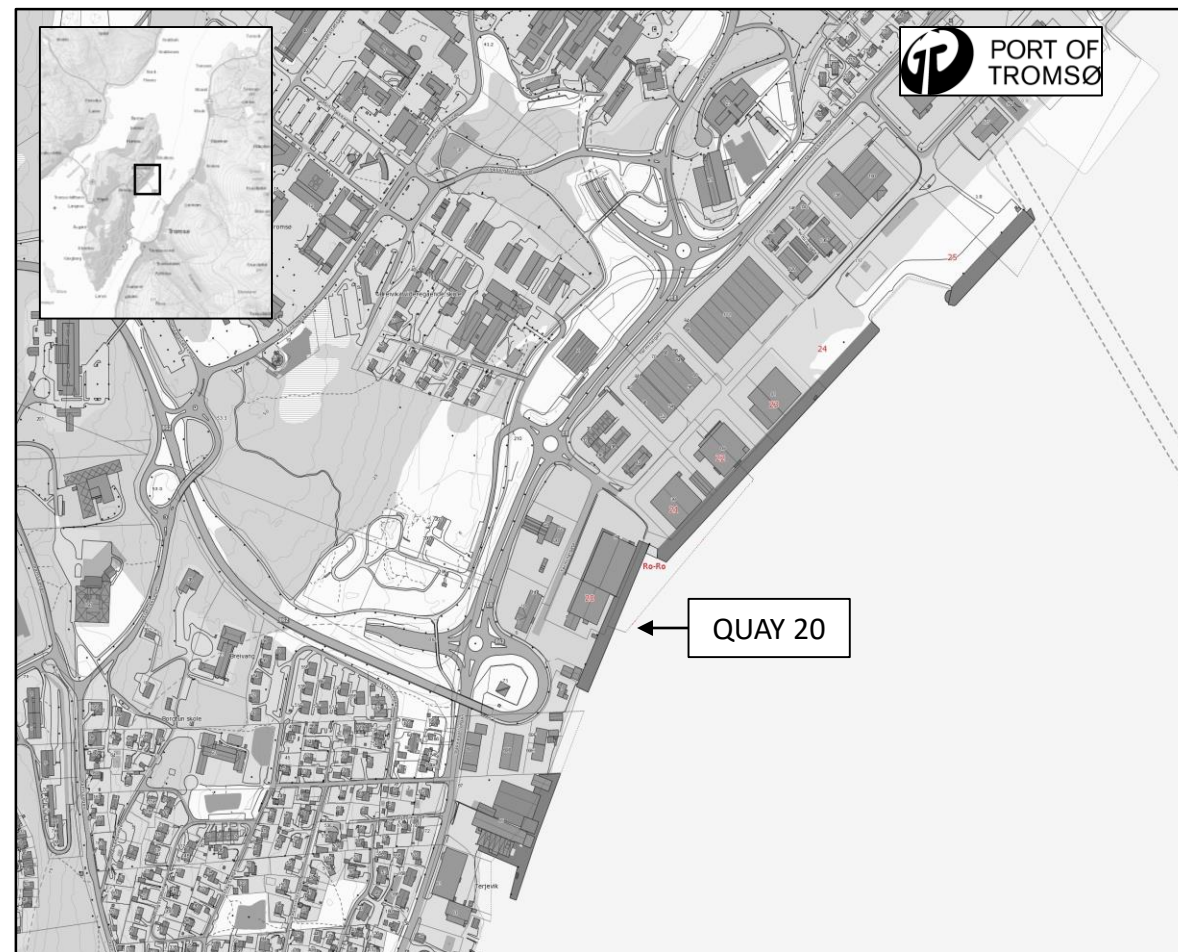
230 V	1 x 125 A South end (50 Hz, 3-Phase)
400 V	2 x 125 A and 1 x 650 A South end (50 Hz, 3-Phase)

Fresh Water

4 x Outlet	25 t/hour
------------	-----------

Notes

Fresh Water: 2 x outlets at the south end and 2 x outlets at the north end



Contact Port of Tromsø for more information at:

E-mail: havnevakta@tromso.havn.no

Phone: + 47 911 07 444

VHF ch 12