

Quay 1 South

General

Area	City Center
ISPS	No
Length	97 m
Width	Approx. 8 m
Depth (Beleived, but not guaranteed. Pls refer to official charts)	West end: 2,3 m and East end: 4,6 m
Bollard	15 t
Load per square meters	1,25 t/m2
Axle load	5 t

Shore Power

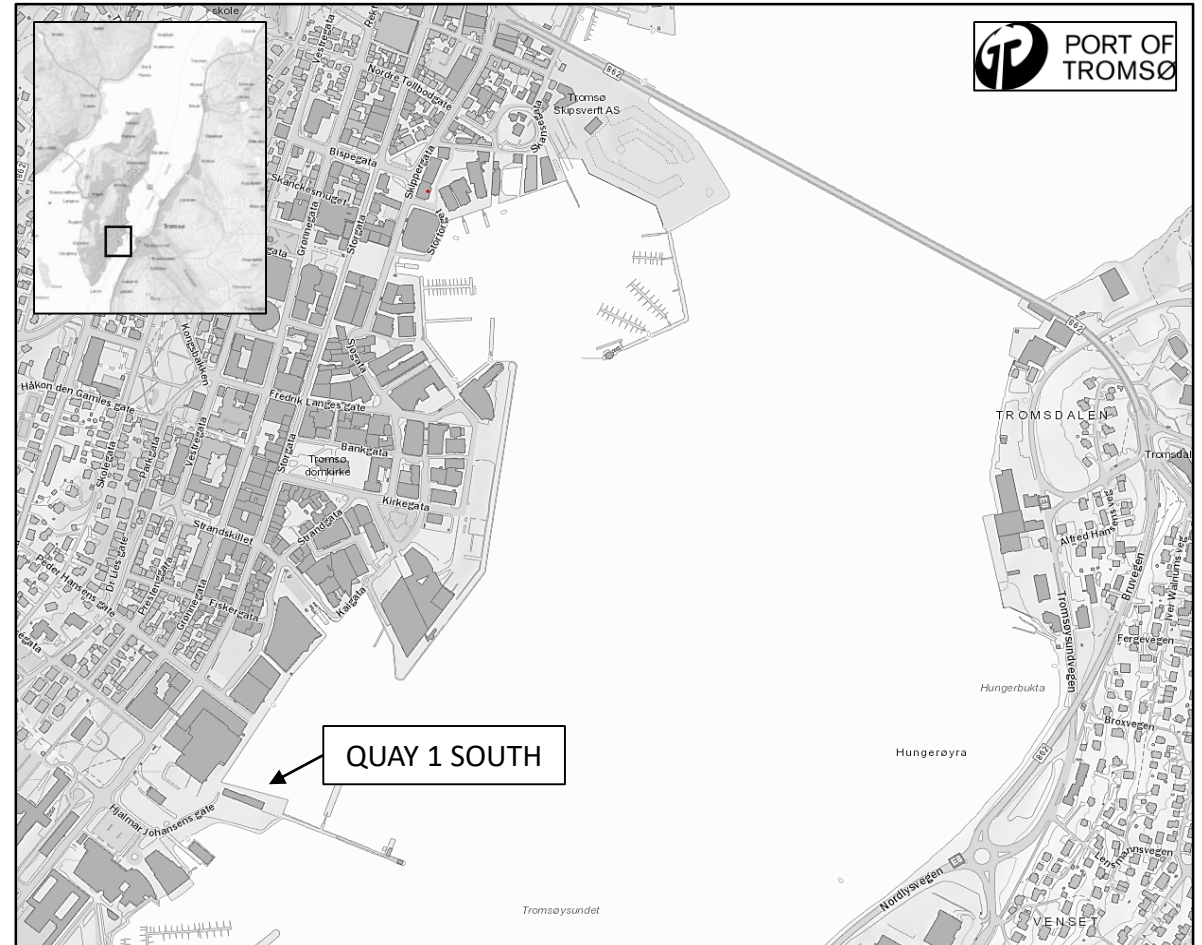
230 V	3 x 125 A and 1 x 80 A (50 Hz, 3-Phase)
400 V	No

Fresh Water

1 x Outlet	1,5 t/hour
------------	------------

Notes

None



Contact Port of Tromsø for more information at:

E-mail: havnevakta@tromso.havn.no
 Phone: + 47 911 07 444
 VHF ch 12