

## Quay 1

### General

Area	City Center
ISPS	No
Length	90 m
Width	N/A
Depth (Beleived, but not guaranteed. Pls refer to official charts)	South end: 3,3 m and North end: 5,4 m
Bollard	10 t
Load per square meters	1,25 t/m2
Axle load	5 t

### Shore Power

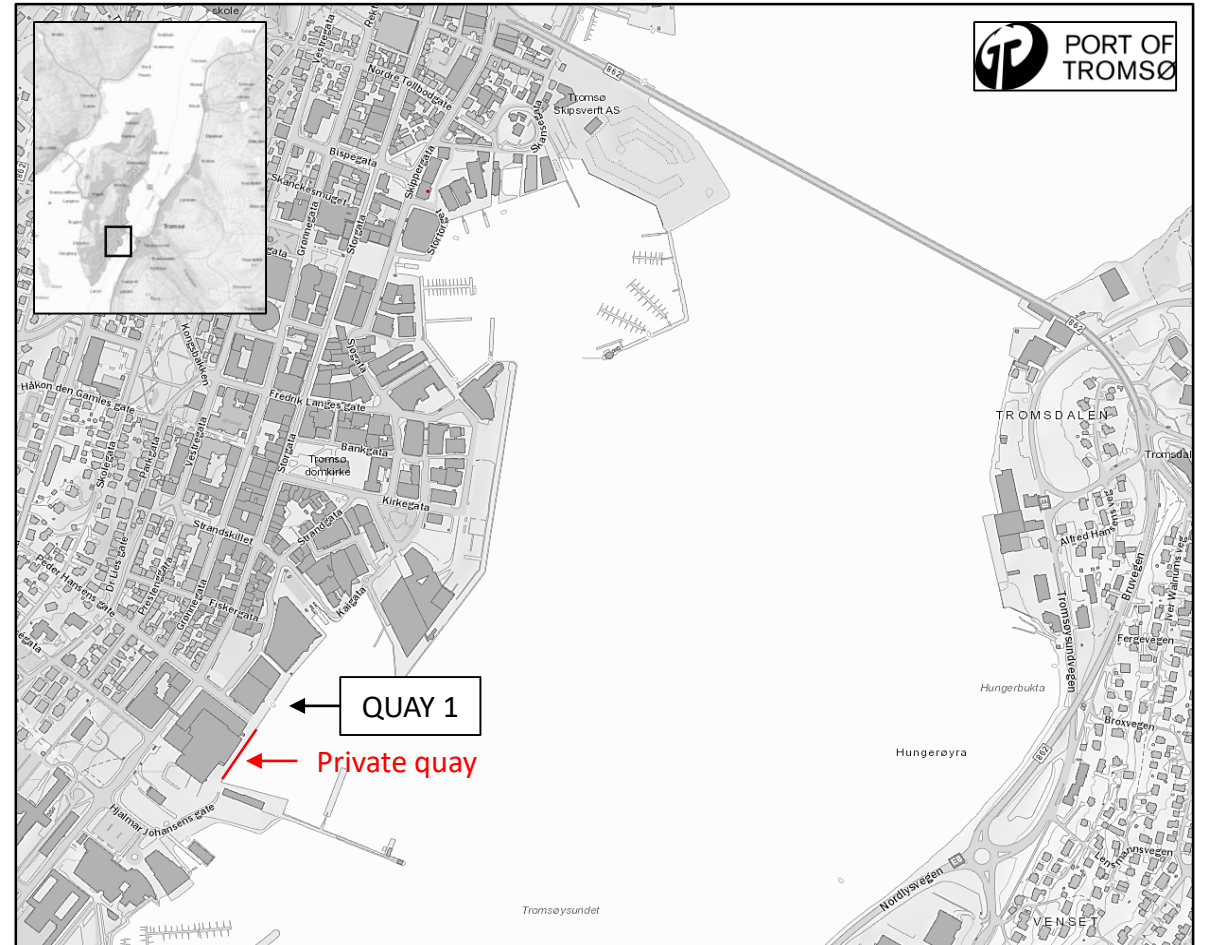
230 V	1 x 125 A
400 V	No

### Fresh Water

1 x Outlet	8 t/hour
------------	----------

### Notes

None



### Contact Port of Tromsø for more information at:

E-mail: [havnevakta@tromso.havn.no](mailto:havnevakta@tromso.havn.no)

Phone: + 47 911 07 444

VHF ch 12